

DUNCLUG COLLEGE

AD VITAM PARAMUS



**POST 16
CHOICES**

SEPT 2023

WWW.DUNCLUG-COLLEGE.CO.UK

Introduction to Post 16 Study at Dunclug College.....	1-5
Art and Design.....	6
Biology.....	7
Business	8
Children’s Play Learning and Development.....	9
Construction and the Built Environment.....	10
Design and Technology.....	11
Digital Technology.....	12
Engineering	13
English Literature.....	14
Environmental Technology.....	15
Employability and Professional Development.....	16
Geography.....	17
Government and Politics.....	18
Hair and Beauty.....	19
Health and Social Care.....	20
History.....	21
Hospitality.....	22
ICT (Single Award)	23
ICT (Double Award)	24
Life and Health Sciences (Single Award).....	25
Life and Health Sciences (Double Award)	26
Mathematics.....	27
Moving Image Arts.....	28
Performing Arts.....	29
Professional Business Services.....	30
Psychology.....	31
Religious Studies.....	32
Sport.....	33
Travel and Tourism.....	34
Careers Information.....	35

Post 16 Study



The Next Stage of your Journey

This booklet has been designed to give you insight into the choices that are available to you at Post 16, and in particular those which are available at Dunclug College, as you contemplate the challenging and rewarding world of Sixth Form. We hope you will find the information informative and helpful and be inspired by the wide variety of choice which is open to you.

The Sixth Form Experience

There are a number of exciting and varied choices at Dunclug College, tailored to suit the needs of our students. You may choose from a range of traditional A level courses or a combination of traditional and applied courses such as BTEC, with Double Award in ICT. Applied courses may be combined with work placements or Foundation A level study.

The Sixth Form Centre

Dunclug College has bespoke supervised 6th Form study areas for Year 13 and Year 14 complete with trolleys of laptops for student use. The Sixth Form Common Room is fitted out with relaxed comfortable seating, a quiet area, vending machines, books and magazines and a number of recreational activities. It will be for use at breaktime, lunchtime and during 'superfree' periods, encouraging friendship and community among Sixth Form students.



Post 16 Study



Post 16 Courses

In this booklet you will find details of all Post 16 courses on offer in Dunclug. You should read in detail what each course entails and determine the best option for you. Students who wish to go on to University should choose a minimum of three Post 16 courses, while some may choose a 4th subject for study at AS level only. There are a number of possible pathways outlined in the following pages.

Work Related Learning

Throughout Sixth Form students are encouraged to take part in a range of work related learning experiences. This can involve workplace visits, volunteering and social action, part-time work, work shadowing, Open Days etc. We also facilitate a number of work placement opportunities. These take a number of formats as follows:

- all students will complete a one-week work placement at an employer of their choice;
- students studying certain subjects may have an industry-related placement included as part of a module—such as BTEC Childcare, CTEC Business and A-Level Health and Social Care. Several major work placements are offered throughout the year and students are encouraged to apply for those of interest. In the previous years we have had students attend specially designed placements with the Army, PSNI, Generation Innovation, Q Radio and NI Screenworks among others. More recently students engaged in online work placements;
- study-time placements: perhaps a student has study time on a Wednesday afternoon, for example, then they may choose to spend this time at a local Primary School to help with an afternoon class and after-school club, or at another suitable approved work placement;
- recurring day placement—many students may find themselves with a study day on their timetable. We can facilitate a placement with an employer so that the student can attend one day a week or fortnight over a longer period of time. This could be considered as a pre-apprenticeship placement.

Post 16 Study



Possible Pathways

A Levels

Students may choose up to complete up to 4 AS levels (depending on Grades at GCSE) and 3 A2 Levels.

BTEC

BTEC qualifications are equivalent in value to A Levels (see UCAS table). Students may follow an Extended Certificate (1 A Level Equivalent) or a Diploma (2 A Level Equivalent). Although being equivalent to A Level they are designed to provide a more vocational approach to learning and to help students develop the specialist knowledge and practical skills they need to progress along their chosen career path.

A combination of A Level and BTEC can be an excellent Pathway for many young people, affording a mix of Examination and Coursework.

Post 16 Foundation

This course is designed for those students who wish to return to Post 16 study to complete GCSE English and GCSE Maths alongside other Level 2 and/ or a single Level 3 Qualifications. This course provides an effective foundation year for A Level study. If returning for a Foundation Year, attendance at English and Maths classes is compulsory.

Post 16 Study



UCAS POINTS & COMBINATIONS

UCAS POINTS	BTEC		A2		AS	
	D*	56	A*	56		
	D	48	A	48	A	20
	M	32	B	40	B	16
	P	16	C	32	C	12
			D	24	D	10
			E	16	E	6

The Student Experience

The student experience is an enriching experience as we aim to develop independence in our young people. Within a close knit and supportive environment, students will find small study groups, a Head of Year, Sixth Form Tutors, Sixth Form Supervisors, access to all of the pastoral supports available prior to Post 16 study, including Literacy and Numeracy support where necessary.

Dunclug College aims to prepare our students fully to continue their educational journey, equip students with wider transferable skills and to enable the transition to University, to Higher Level Apprenticeships and/ or their chosen career.

We trust that every child will find a pathway which is suitable and enabling for them.

Enrichment activities

All students will be involved in a range of enrichment activities, some of which will be timetabled. These will include peer mentoring, charity committee (e.g. for those with an interest in the ASHA trip to Delhi, India) and may include other options such as Young Enterprise, Financial Management, ECDL, Sign Language classes, Survival Cookery, Study Skills, Fitness Training, Peer Mentoring or Financial Management

Post 16 Study



Collaboration Explained

For a number of years now, schools have worked closely with each other and with the Northern Regional College to provide a rich curriculum for all the pupils in the Ballymena Area. This is what we have called, Curriculum Collaboration through Ballymena Learning Together (BLT).

In simple terms, pupils have the potential to access a wider range of subject choices for Post 16 study. A block of time is agreed between schools and the NRC and during this common time, we each select subjects to be delivered. All subjects are delivered at the same time in each school and the NRC. Students may therefore opt for one subject delivered in any of the participating schools. The schools involved are Cambridge House, Cullybackey College, Dunclug College, St Patrick's College and the Northern Regional College.

What subjects may be delivered at the NRC?

Subjects traditionally delivered in the Northern Regional College are BTEC Construction and A Level Environmental Technology. If you choose any of these subjects, you must go to the NRC to study them. They will not be delivered on the Dunclug College site.

What subjects may be included in school to school collaboration?

Subjects which may be shared between schools could be A Level Geography, Moving Image Arts, Spanish, Maths and BTEC Level 3 in Sport to name but a few. Many of these will be delivered in Dunclug College and attract students from other schools, while a small number of these subjects may be delivered in other schools.

How will I be able to get to and from another school or college?

Free transport is provided between schools and to and from the NRC when necessary. The BLT Block will be scheduled either at the beginning or end of the school day to minimise the time required to transfer between schools. On such occasions, student go directly to and directly home from the host school.

Other information

When the Options are made available to you and you see that a subject is delivered through collaboration with another school or the NRC, then you will need to be familiar with this information. If you opt for a subject delivered through collaboration you need to be a highly motivated student. All teaching will take place at the host school. You will be in a class with other students from that school (in some cases other students will attend class in our school). The teacher from the other school will write your report and you may also attend a parent consultation in the host school.

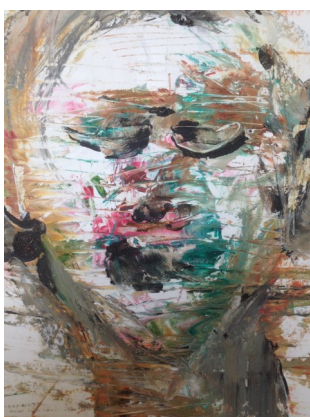
Art and Design GCE



GCE Art and Design allows students the opportunity to experiment with various individual themes, techniques and materials. Students are encouraged to work independently to develop the skills required to be successful in the field of Art and Design.

You will learn to:

- think independently and conceptually;
- gain knowledge of the wider context of Art and Design, both Historical and Contemporary;
- refine skills in all areas of Art and Design, experimenting with ideas, processes and media;
- write critically about both your own work and the work of relevant Artists/Designers.



Progression and career opportunities

GCE Art and Design provides an excellent grounding for those seeking Higher Education or employment in a wide variety of settings including Fashion, Textile, Interior, Set Design, Advertising, Graphics, Fine Art etc. The list goes on...

Exam Board: CCEA
HOD: Mrs Simpson

Assessment

The course is divided into two units each year:

AS Unit 1 Experimental Portfolio- This unit is worth 50% of AS and 20% of A Level.

AS Unit 2 Personal Response- This unit is worth 50% of AS and 20% of A level.

A2 Unit 1 Personal and Critical Investigation (Includes a written element—Personal Inquiry) - This unit is worth 60% of A2 and 36% of A level.

A2 Unit 2: Thematic Outcome— This unit is worth 40% of A2 and 24% of A level.



Biology GCE



Entry Requirement: Double Award Science Grade BB minimum

Unit AS 1—Molecules and Cells

Learn about the structure and function of molecules within the body such as enzymes, viruses, cells and tissues. You will also discuss and develop understanding of specialized cells in organs, such as the small intestine.

Unit AS 2—Organisms and Biodiversity

Covers transport and exchange mechanisms in plants and mammals, including the circulatory system, as well as learning how organisms are adapted for survival. You will also gain a greater depth of knowledge of Ecology and in particular, learn about the biodiversity in local habitats.

Unit AS 3—Practical Skills in AS Biology

A series of required practical assessments and a 1 hour written exam assessing practical skills. Students will complete at least seven of the outlined practical tasks and record evidence of their completion. The written exam will assess practical skills developed throughout the AS course.

Unit A2 1—Physiology, Co-ordination and Control and Ecosystems

Develop your knowledge of homeostasis including the kidney and excretion, immunity, co-ordination and control in plants, animals and ecosystems.

Unit A2 2—Biochemistry, Genetics and Evolutionary Trends

Gain knowledge of the biochemical processes of photosynthesis and respiration. Students will also learn about DNA as the Genetic Code and DNA Technology in the production of Genetically Modified organisms.

Unit A2 3—Practical Skills in Biology

This unit includes a series of required practical assessments and a 1 hour 15 min exam assessing practical skills. Students will complete at least five of the outlined practical tasks and keep a record of their completion. The written exam will assess practical skills developed throughout A2.

Assessment

Units studied are examined in the summer of the respective year.

Progression and career opportunities

A-Level Biology is a requirement for many science-related degrees including pharmacy, forensic science and biomedical sciences.

While it is not a requirement for nursing, if you study A Level Biology the grades required in A level will reduce from BBC to BCC

Exam Board: CCEA

HOD: Mrs Harding



CTEC Level 3 in Business



The Cambridge Technical Level 3 Business course consists of 5 units and is 50% examination and 50% portfolio— the units are specifically chosen so that it gives the best opportunity to further a career in any of the areas of Business.

The full two years need to be completed in order to achieve the qualification.

The course suits all learning styles. The units include a hands-on practical experience based upon real life scenarios. This then enables the scenarios to be applied and discussed in areas of the portfolios.

All core business functions are covered - Business Planning, HR, Production, Finance, Marketing, Recruitment & Selection and Project Management.

You will learn to:

- Apply the skills that you have been taught by completing each of the units;
- Take each of the opportunities to acquire the essential knowledge and tools for the world of work by developing transferable skills such as planning, research and analysis, working with others and effective communication.

Assessment

Unit 1: The Business Environment—

Assessment— 2 Hour External Examination

Unit 2: Working in Business

Assessment— 1 Hour 30 Minute Examination

Unit 3: Customers and Communication

Assessment— 100% Portfolio

Unit 4: Marketing and Market Research

Assessment— 100% Portfolio

Unit 20: Event Management

Assessment— 100% Portfolio

Progression and career opportunities

The qualification is designed to enable learners to either progression to higher education or to enter employment, and undertake other related occupational qualifications. Eg Business, Marketing, Project Management, Event Management, Finance, Leadership and Management

Exam Board: OCR

HOD: Mrs Tuff



Children's Play, Learning and Development BTEC



Entry requirement: GCSE English and Maths at Grade C or above

This course allows students to benefit from studying units based on children's play, learning and development. Students also have an opportunity to attend work experiences with children of different ages and needs. This course focuses on children from birth up to seven years eleven months.

You will have:

- an understanding of children's developmental progress from birth up to 7 years 11 months;
- an understanding of how children develop literacy, language, numeracy and communication skills and how to promote and support this development;
- an understanding of the benefits of play, the influence of theories and approaches to play, and learning activities for children;
- an understanding of how to provide and support purposeful play and learning activities for children;
- an understanding of the responsibilities of a professional to promote and maintain health and safety, and what to do in an emergency or when there are concerns about a child's welfare.

Assessment

All units must be completed in order to be successful. The course has two external exam units and two internal assignments to complete. Marks are awarded at a pass, merit or distinction level. Throughout the course in year 13 and 14 you are required to complete four mandatory units and acquire hours within placement settings.

- Children's Development—external exam
- Development of Children's Communication, Literacy and Numeracy skills— external exam
- Keeping children safe—internal assignments
- Play and Learning— internal assignments

Progression and career opportunities

BTEC courses mean you can progress straight into employment, if successful. There are a variety of careers that you can explore, where you would receive further training whilst working in an environment supporting children. The BTEC National Extended Certificate in Children's Play, Learning and Development has the equivalence of one GCE A Level, and it is possible for you to progress further into higher education, both in Northern Ireland or further a field.

Exam Board: Pearson

HOD: Mrs Hall



Construction and the Built Environment BTEC



This course may be offered through collaboration with the Northern Regional College. It will be delivered entirely on their Campus at Farmlodge.

Units include: Construction Technology & Design in Construction & Civil Engineering, Sustainable Construction, Building Technology in Construction, Science and Materials in Construction and the Built Environment, Surveying in Construction & Civil Engineering, Health, Safety and Welfare in Construction and the Built Environment, Computer Aided Drafting and Design for Construction.

Entry Requirements:

Learners must have at least four GCSE's at grade C or above, including Mathematics and English or equivalent.



Progression and career opportunities

This qualification is aimed at learners who wish to progress to university to study degrees in construction related disciplines such as architecture, civil engineering, building, surveying, quantity surveying, planning and property investment.

Assessment

BTEC Subsidiary Diploma is tailored to specific industry needs and offers an engaging programme for learners to acquire the skills and knowledge necessary to progress directly into a higher level within their chosen area. The Level 3 BTEC Subsidiary Diploma is broadly equivalent to one GCE A Level and is studied over two years – 3 units each year. After successful completion of the first year learners will be awarded a BTEC Certificate before proceeding to complete the full Subsidiary Diploma in the second year. As the Level 3 BTEC qualification is predominantly coursework based, learners can combine them with traditional A Levels to help take the pressure off around exam time, with learners being able to focus their revision efforts on fewer courses. The Level 3 BTEC Subsidiary Diploma is fully recognised by universities and carries UCAS Tariff points.

Exam Board: Pearson

Contact: Mrs Alexander



Design and Technology (Product Design) GCE



This course reflects the demands of a truly modern and evolving society – This qualification will enable you to apply yourself and give you the skills to succeed in your chosen pathway.

Equipping students with design skills for the future - Students will be able to recognise design needs and develop an understanding of how current global issues, including integrating technology, impacts on today's world.

Encourages creativity and innovation - At A level students will have the confidence to innovate and produce creative design solutions as they develop their own design brief with a client/end user.

Progression from GCSE and beyond - The course has been designed to ensure clear progression of knowledge, understanding and design/making skills so that students will have a coherent experience of moving from the breadth of GCSE to the specialisation depth of A level and beyond.

Progression and career opportunities

The course has been designed to ensure clear progression of knowledge, understanding and design/making skills so that students will have a coherent experience of moving from the breadth of GCSE to the specialisation depth of A level and beyond.

Assessment

Component 1: Principles of Design and Technology.

Written examination worth 50% of the qualification

Mathematical and scientific principles are an important part of designing and developing products and students will be expected to apply these principles when considering the designs of others.

Component 2: Independent Design and Make Project

Non-examined assessment 50% of the qualification

There are **four** parts to the assessment:

Part 1: Identifying and outlining possibilities for design

Part 2: Designing a prototype

Part 3: Making a final prototype

Part 4: Evaluating own design and prototype

Exam Board: Pearson

HOD: Mr Simpson



Digital Technology GCE



Our GCE in Digital Technology is for students interested in current and emerging technologies, the impact they have and how to use them effectively. This qualification is likely to appeal to all, but it might particularly interest those who enjoyed studying Digital Technology, Mathematics, Sciences or Technology and Design at GCSE level.

Students will study Innovation in Digital Technology, Creative Digital Practices, Connected Systems and Digital Solutions. These two units are coursework based where students investigate, plan, design, create, test and review a game and a transactional website linked to a server data Base.

The skills acquired studying this course are highly valued in Higher Education and in the growing computer industry in Northern Ireland. Students will also develop other valuable transferable skills such as research, working with others and problem solving.

Progression and career opportunities

The GCE in Digital Technology students a wide choice of progression options into further study, training or relevant employment.

Exam Board: WJEC

HOD: Miss Mettleton

Assessment

Unit AS 1: Innovation in Digital Technology—2 hour exam

Unit AS 2: Creative Digital Practices—non exam assessment of approximately 45 hours, worth 20% of qualification—Creating a Game

A2 Unit 3: Connected systems—2hour 30 minute exam worth 30% of overall mark

A2 Unit 4: Digital Systems—non exam assessment approx. 45 hours—worth 30% of final exam—Creating an transactional Website



Engineering BTEC



Entry Requirements: GCSE Maths at C* or above and Double Award Science preferred

BTEC Engineering will give you an understanding of the practical skills and mathematical and scientific knowledge needed to begin professional work in the Engineering Industry or move on to further study.

This qualification allows you to explore the world of engineering. The structure of the course allows you to focus on your interests or introduce yourself to new areas such as interpreting engineering drawing, material or mechanical systems.

In this course you will examine common engineering processes, including health and safety legislation, regulations that apply to these processes and how individual and team performance can be affected by human factors. You will learn the principles of another important process, engineering drawing, and develop two-dimensional (2D) computer-aided drawing skills while producing orthographic projections and circuit diagrams. Finally, you will work as a team member and team leader to apply a range of practical engineering processes to manufacture a batch of an engineered product or to safely deliver a batch of an engineering service.

Progression and career opportunities

This qualification provides a broad basis of study for the engineering sector. It provides an excellent grounding for those seeking employment in a Engineering industry, both mechanical or electrical. In addition it is possible to progress into further study at either BTEC National or Degree level.

Assessment

Areas of Study:

- **Unit 1** Engineering Principles (External)
- **Unit 2** Delivery of Engineering Processes Safely as a Team (Internal)
- **Unit 3** Engineering Product Design and Manufacture (External)
- **Unit 10** Computer Aided Design in Engineering (Internal - Option)

Equivalent in size to one A Level.

4 units of which 3 are mandatory and 2 are external.

Exam Board: CCEA

HOD: Mr Simpson



English Literature GCE



GCE English Literature allows pupils the opportunity to develop their interest and enjoyment in literature through reading widely, independently and critically. Pupils will study prose, poetry and drama texts from different periods and cultures.

You will learn how to:

- build on the skills learnt and practised at GCSE level;
- write creatively to an advanced level;
- develop a critical awareness and understanding of individual works of literature;
- explore the contexts of texts and others' interpretations of them;
- develop an understanding of relationships between texts.

Entry Requirements:

Grade **B** in GCSE English Literature preferred.

Assessment

Year 13 Study:

AS 1: Examination

The Study of Poetry 1900-Present (*Frost & Heaney*)

The Study of Drama 1900-Present (*A Streetcar Named Desire*)

AS 2: Examination

The Study of Prose Pre 1900 (*Wuthering Heights*)

A2 1: Examination

Shakespearean Genres (*Othello*)

A2 2: Examination

The Study of Poetry Pre 1900 and Unseen Poetry (*John Donne*)

A2 3: Timed-Study on the theme 'Dystopia'

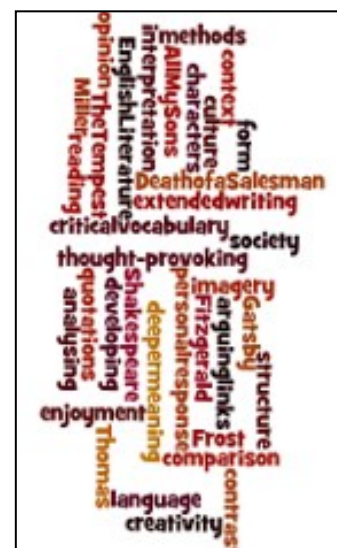
Internal assessment on 'The Handmaid's Tale' - Margaret Atwood and 'The Road' - Cormac McCarthy

Progression and career opportunities

A Level English Literature provides an excellent grounding for those seeking employment in: law, teaching, publishing, advertising and PR, journalism, HR, TV and radio.

Exam Board: CCEA

HOD: Mr Burnett



Environmental Technology GCE



This course may be delivered in collaboration with the NRC. Your classes would be entirely on the NRC Campus at Farmlodge.

This Science-based A Level subject focuses on technological solutions to the energy and environmental problems facing the world today.

This qualification will allow learners to:

- Research the need to manage our planet's resources more effectively and explore how our society will make the transition to a more sustainable way of living;
- Appreciate how Science and Technology can contribute towards a sustainable economy and society.



Progression and career opportunities

Progress to university to study degree in renewable energy related disciplines such as Environmental Science, Architectural Engineering, Energy, Energy Management, Clean Technology and Renewable Energy Engineering.

Assessment

Units include:

Year 1 Unit 1 (AS) The Earth's Capacity to Support Human Activity (Coursework)

Unit 2 (AS) Renewable Energy Technologies (Exam)

Year 2

Unit 1 (A2) Building and Managing a Sustainable Future (Exam)

Unit 2 (A2) Environmental Building Performance and Measurement (Coursework)

Entry Requirements

Learners must have at least 4 GCSE's at grade C or above or relevant qualifications. GCSE's must include Mathematics and one Science subject.

Exam Board: CCEA

Contact: Mrs Alexander



Employability and Personal Development



Course Title: OCN NI Level 3 Certificate in Employability and Professional Development Skills

The OCN NI Level 3 Certificate in Employability and Professional Development Skills qualification is recognised by UCAS, with 16 points allocated. The aim of this qualification is to provide learners with a range of employability and professional skills, which promote self-confidence, self-esteem and motivation. The objective of this qualification is to assist learners in acquiring the skills, attributes, behaviours and values that are needed to enter and succeed in the world of work. This course will be completed in one year and will be assessed by a written portfolio consisting of a variety of evidence sources such as presentations and demonstrations. Grading for this qualification will be pass/fail.

Progression and career opportunities

The OCN NI Level 3 Certificate in Employability and Professional Development Skills allows for progression to further learning in this area and/or into employment. This is an ideal course for those who wish to work in Social care and/or charity work



Assessment

Units include:

Anti-Bullying Awareness, Application and Interview Processes, Developing Effective Time Management Skills, Mental Health, Well-being and Building Resilience, Innovation and Enterprise, Using Social Media in Business and Developing a Personal Statement

Entry Requirements

There are no specific entry requirements for this course. It is ideally suited to those who have already completed OCN Employability but is open to all students. It is an ideal option for those who are considering a transition year and can be done alongside Resit Maths and English

Exam Board: OCN

Contact: Mrs Armstrong

Influencing a positive work environment

Geography GCE



It may be possible to study A Level Geography through collaboration with another school. Studying GCE Geography will enable students to gain a greater understanding of people and places, weather systems, tourism, sustainable development, cultures and issues affecting people and places across the world.

This course will enable students to develop a wide range of transferable and employment skills such as investigating, collecting and recording data with accuracy, collating and evaluating information and being able to contribute to important debates on the current global issues.

You will:

- develop an understanding of the interaction between people and the environment;
- be able to understand and empathise with issues that affect you as a global citizen;
- collect geographical data in the field and test geographical theory; and
- develop ICT skills through new technologies including Geographical Information Systems (GIS).

Progression and career opportunities

Geography can lead to careers in a wide and diverse range of areas such as urban planning, cartography, GIS applications, climatology, environmental management, weather forecasting, research, teaching and demography. Others use the skills acquired through the study of geography to pursue careers that require similar skills, for example, GIS related jobs, which is a growth area.

Assessment

AS 1: Physical Geography – External exam 1 hour 15 mins, 40% of AS, 16% of A level

AS 2: Human Geography – External exam 1 hour 15 mins, 40% of AS, 16% of A level

AS 3: Fieldwork Skills and Techniques – External exam 1 hour, 20% of AS, 8% of A level

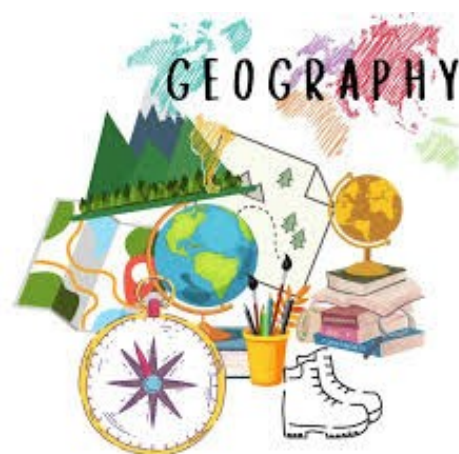
A2 1: Physical Processes, Landforms and Management – External exam 1 hour 30 mins, 24% of A level

A2 2: Processes and Issues in Human Geography – External exam 1 hour 30 mins, 24% of A level

A2 3: Decision-Making in Geography – External exam 1 hour 30 mins, 12% of A level

Exam Board: CCEA

HOD: Mrs Kerr



Government and Politics GCE



You will learn to:

- develop a lifelong interest in government and politics;
- develop higher order thinking skills, for example creative thinking and problem-solving;
- carry out research;
- think critically about the political systems in which you live and how you may participate in those systems;
- develop advanced study skills that help you prepare for third level education;
- provide extended responses and evidence of quality of written communication; and
- demonstrate, through external assessments, that you are able to understand and apply key concepts and can think and write critically.

Assessment

The course is divided into four units:

Unit 1 Government and Politics of Northern Ireland

This unit is worth 16% of the final mark and it is assessed externally through a written examination (1hr 15 mins) taken in Year 13.

Unit 2 The British Political Process

This unit is worth 24% of the final mark and it is assessed externally through a written examination taken in Year 13 (1hr and 45 mins).

Unit 3 A Comparative study of the Government and Politics of the United States of America and the United Kingdom

This unit is worth 35 % of the final mark. It is assessed externally through a written exam taken in Year 14 (2hr 15mins).

Unit 4 Political Power

This unit is worth 25% of the final mark and it is assessed externally through a written exam taken in Year 14 (1 hr 30).

Progression and career opportunities

This course opens the door to many careers including Law, Politics, Teaching, work for Local Government and International Relations

Furthermore, it is an excellent general A Level to supplement two other A Levels

Exam Board: CCEA

HOD: Miss McErlean



Hair Dressing Level 2 Occupational Studies



This is an excellent hands on course and will be delivered in our specially designed salon. You may choose it only if you have not previously studied this in school. You may choose it as an enrichment along with your A Levels

Creative Blowdrying Techniques

Learners should be able to:

- demonstrate their knowledge of products suitable for different hair types and textures;
- use a range of flat and round brushes to achieve different styles;
- demonstrate how the correct styling products and equipment are used to achieve the desired result;
- demonstrate how to complete the styling by use of finishing products.

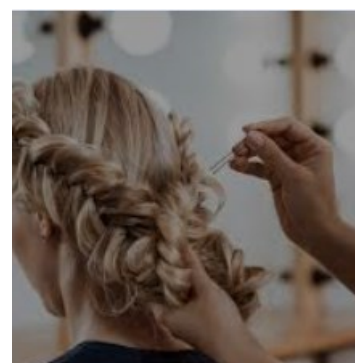
Creative Upstyling

Learners should be able to:

- discuss how the hair structure and scalp are affected by humidity, in correct application of heat and various materials added to secure hair;
- use a range of suitable products which complement the required look;
- use a range of upstyling techniques to include plaiting, fishtails, twisting, curling, knotting, looping and rolling;
- describe three career opportunities in the hairdressing industry;
- evaluate their own performance in practical tasks; and
- carry out an end-of-unit evaluation.

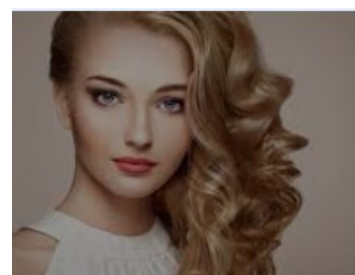
Progression and career opportunities

It may be possible to move into a career in Hairdressing, moving directly to an apprenticeship in a salon or moving on to the NRC



Exam Board: CCEA

HOD: Mrs Alexander



Assessment

Assessment is 60% practical and 40% theory. All theory is completed through a booklet and there is no end of year exam.

Health and Social Care GCE



GCE A Level Applied Health and Social Care offers you the opportunity to develop skills, knowledge and understanding that provide a basis for entering into employment or higher education within the health and social care sector.

You will learn to:

- promote positive care in a variety of settings;
- understand the importance of communication in care settings;
- identify the importance of Health & Well Being;
- consider the variety of services provided within the community and the impact on service users;
- design and present a health promotion campaign, evaluating success and suggesting improvements;
- identify needs that families may have and how to support the family.

Year 13 also requires a placement experience in a care setting .

Assessment

Year 13

* Unit 1 Promoting Positive Care

* Unit 2 Communication in Health and Social Care and Early Years

These units are assessed internally through coursework and together comprise 50% of your grade.

* Unit 3 Health and Well Being

This unit is assessed through a 2 hour written exam (50% of AS Grade)

All three units are compulsory **Year 14**

* Unit 3 Providing Services (2 hour exam 50%)

* Unit 4 Public Health and Health Promotion

* Unit 5 Supporting the Family

Assessed internally through coursework completed in Year 14 (50%)

Six units are compulsory units and must be completed to gain an A level in Health and Social Care.

Progression and career opportunities

GCE Health & Social Care enables progression to further education such as degree in Social Work, Early Years Provision and Nursing. Indeed some universities are stating Health and Social Care as an essential subject for A level.

It also provides a basis for those seeking employment in a wide range of careers within education and the health and social services such as care assistant or nursing assistants.

Exam Board: CCEA

HOD: Mrs Hall



History GCE



GCE History allows pupils the opportunity to investigate various historical periods and develop their interest in history.

You will learn to:

- acquire an understanding of different identities within society and an appreciation of social, cultural, religious and ethnic diversity through the study of British and Irish history and aspects of European history;
- improve as an effective and independent learner, and as critical and reflective thinker with a curious and enquiring mind;
- develop the ability to ask relevant and significant questions about the past, to carry out research and evaluate conclusions;
- acquire an understanding of the nature of historical study, for example that history is concerned with interpretations based on available evidence and that historical interpretations may be provisional;
- make links and draw comparisons across different periods and aspects of the past; and organise and communicate your historical knowledge and understanding in different ways, arguing a case and reaching judgements.

Assessment

Unit 1 Germany 1919-1945.

This unit is worth 20% of the final mark and it is assessed externally through a written examination (1hr 30 mins) taken in Year 13.

Unit 2 Russia 1914-41

This unit is worth 20% of the final mark and it is assessed externally through a written examination taken in Year 13 (1hr and 30 mins).

Unit 3 Ireland Under the Union 1800-1900

This unit is worth 20% of the final mark. It is assessed externally through a written exam taken in Year 14 (1hr 15mins).

Unit 4 Partition of Ireland 1900-1925

This unit is worth 40% of the final mark and it is assessed externally through a written exam taken in Year 14 (2 hrs).

Progression and career opportunities

GCE History enables progression to further historical study or a range of degree courses such as business, law, management, teaching and IT. It provides an excellent grounding for those seeking employment in a wide variety of settings including various roles within the media, law, business, police force, teaching and the armed forces.

Exam Board: CCEA

HOD: Miss McErlean



Hospitality BTEC



The qualification provides learners the opportunity to develop their knowledge and practical skills within the hospitality industry enabling them to progress into employment or a higher level qualification within disciplines such as Hospitality Management, Customer Service or Catering.

Core Units include:

Hospitality Industry, Principles of Supervising Customer Service, Performance in Hospitality, Leisure, Travel and Tourism and Providing Customer Service in Hospitality.

Optional (learners are only required to study three of these units):

Supervisory Skills in the Hospitality Industry, European Food (Theory and Practical), Contemporary Food (Theory and Practical), Advanced Skills and Techniques in Producing Desserts and Petits Fours (Theory and Practical).

Entry Requirements: Learners must have at least four GCSE's at grade C or above, including Mathematics and English or equivalent

Progression and career opportunities

Progression directly into work or to college to further study. Working front of house in a hotel or hospitality setting or as a trainee chef.



Exam Board: Pearson

Contact: Mrs Alexander

Assessment

BTEC Subsidiary Diploma is tailored to specific industry needs and offers an engaging programme for learners to acquire the skills and knowledge necessary to progress directly into a higher level within their chosen area. The Level 3 BTEC Subsidiary Diploma is broadly equivalent to one GCE A Level and is studied over two years – 3 units each year. After successful completion of the first year learners will be awarded a BTEC Certificate before proceeding to complete the full Subsidiary Diploma in the second year. As the Level 3 BTEC qualification is predominantly coursework based, learners can combine them with traditional A Levels to help take the pressure off around exam time, with learners being able to focus their revision efforts on fewer courses. The Level 3 BTEC Subsidiary Diploma is fully recognised by universities and carries UCAS Tariff points



Information Technology BTEC Single Award



Interested in IT? Interested in how businesses use IT? Want to find out about how businesses make use of social media? Then this exciting new BTEC could be the choice for you!

Information technology (IT) systems have a vital role in the world around us and play a part in almost everything we do. Having a sound understanding of how to effectively select and then use appropriate IT systems will benefit students in their personal and professional life. Students will explore the relationships between the hardware and software that form an IT system, and the way that systems work individually and together, as well as the relationship between the user and the system. You will examine issues related to the use of IT systems and the impact that they have on organisations and individuals.

In other units students will examine how an efficient data design follows through to an effective, usable database by developing design solutions. Students will evaluate each stage of the development process and the effectiveness of their database solution.

Social media and its usefulness is also investigated. Students will be familiar with how social media can be used personally but they will learn how it can be effectively used in the business context.

Progression and career opportunities

When completed alongside two other level 3 courses BTEC IT can allow access into many careers such as IT, web development and/or university courses such as those shown below:

- HND in Business
- BA (Hons) in Computer Arts
- BSc (Hons) in Software Development
- BA (Hons) in Accounting and Finance.

Exam Board: CCEA

HOD: Miss Mettleton

Assessment

Compulsory Units

Information Technology Systems (External)

Creating Systems to Manage Information (External)

Using Social Media in Business (Internal)

Optional Units

Data Modelling (Internal)



Information Technology BTEC Double Award



The BTEC National Diploma in ICT is designed to support learners who want an in depth study of the computing sector as part of a 16-19 study program. Going further and exploring ICT in greater depth this course is for pupils who are planning for a career in ICT or at a higher education course within the sector.

Students will investigate and complete the single award units as well as study website development. For this unit, students will create a website to a given brief

Cyber security continues to be a crucial aspect of the modern world with the ability to protect individuals and businesses from hacking, sabotage and other forms of cyber attack a vital weapon in the armoury of anyone in the ICT industry. This Diploma course explores this area.

Students will also study Project Management and Coding. These units run in parallel, giving students a realistic idea of how to create a design system using code, within the confines of a project. They are expected to produce realistic timelines and evaluate their project

Progression and career opportunities

When completed alongside another level 3 course, BTEC National Diploma in ICT can allow access into many careers such as IT, web development and/or university courses such as those shown below:

- HND in Business
- BA (Hons) in Computer Arts
- BSc (Hons) in Software Development
- BA (Hons) in Accounting and Finance.

Assessment

The following are the likely units for the Double Award Course:

- **Information Technology Systems** (Exam)
- **Creating Systems to Manage Information** (Controlled Assessment)
- **Using Social Media in Business** (Internal)
- **Website Development** (Internal)
- **Cyber Security and Incident Management** (Controlled Assessment)
- **Programming** (Internal)
- **IT Program Management** (Internal)
- **Website Development** (Internal)

Exam Board: Pearson

HOD: Miss Mettleton



Life and Health Science GCE (Single Award)



Entry Criteria: Double Award Science

Students will develop an interest in and enthusiasm for science, including developing an interest in further study and careers in research science.

Unit AS 1—Experimental Techniques

In this unit students develop skills in a range of experimental techniques useful in Biology, Chemistry and Physics. Students develop scientific skills students by completing an investigation, and present each investigation as a report.

Unit AS 2—Human Body Systems

Learn how human body systems work and how they support good health. Key concepts such as energy, nutritional and physical requirements for good health are all studied.

Unit AS 3—Aspects of Physical Chemistry in Industrial Processes

Develop skills in performing calculations in chemistry. Students also apply their knowledge of energetics, kinetics and equilibrium in the industrial manufacture of chemicals.

Unit A2 1 —Scientific Method, Investigation, Analysis and Evaluation

Demonstrate an understanding of what makes an investigation scientific. A scientific topic is chosen to investigate

Unit A2 2 —Organic Chemistry

Focus on basic reactions within organic chemistry, within three distinct areas. Nomenclature, structure and isomerism within organic compounds; uses of alkanes, alkenes and alcohols in industry; and common polymers, their uses and safe disposal.

Unit A2 3—Medical Physics

Students appreciate the physical principles used in healthcare applications for medical monitoring, diagnosis and treatment. Includes physiological measurement, invasive and non-invasive imaging techniques and the medical use of radioactive isotopes.

Assessment

Units studied are examined by external assessment in the summer of the respective year.

Progression and career opportunities

The specification allows students to develop their subject knowledge, understanding and skills, while also providing a firm grounding for students wishing to progress to higher education in life and health sciences or related



Exam Board: CCEA

HOD: Mrs Harding



Life and Health Science (Double Award)



Entry Criteria: Double Award Science

Life and Health Science allows the student to develop their interest in, and enthusiasm for Science, including developing an interest in further study and careers in research science. It also develops competency in a range of practical skills while allowing the student to understand different areas of the subject.

(P) - Portfolio unit (E) - Exam unit

You will learn:

Unit AS 1: Experimental Techniques (P);

Unit AS 2: Human Body Systems (E); and

Unit AS 3: Aspects of Physical Chemistry in Industrial Processes (E).

In addition **Double Award** students must complete:

Unit AS 4: Brain Science (P);

Unit AS 5: Material Science (E); and

Unit AS 6: Medicine, Drugs and Clinical Trials (P).

All A2 students must complete:

Unit A2 1: Scientific Method, Investigation, Analysis and Evaluation (P);

Unit A2 2: Organic Chemistry (E).

The **Double Award** also includes:

Unit A2— Medical physics (E);

Unit A2— Genetics, stem cell and cloning (E);

Unit A2—Microbiology (P);

Unit A2— One other unit (P).

Progression and career opportunities

This specification allows students to develop their subject knowledge, understanding and skills. It provides a firm grounding for students wishing to progress to further education in Life and Health Sciences and related subjects such as engineering, electronics or science research. The course will also allow students to develop a deeper appreciation of different subject areas, and how they relate to each other.

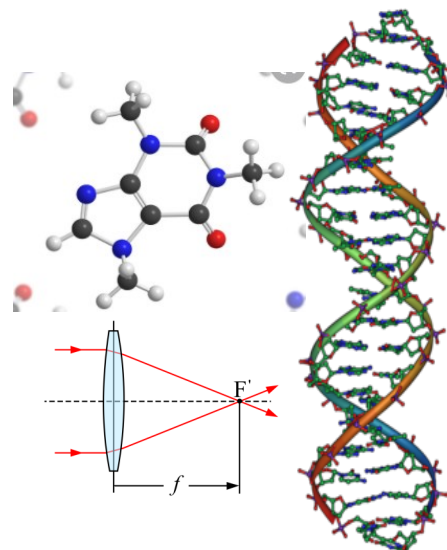
Exam Board: CCEA

HOD: Mrs Harding

Assessment

Double Award students take all three External assessment units at AS Level and three at A2 (including Unit A2:2).

Students take all three Internal assessment units at AS Level and three at A2 (Including Unit A2:1).



Mathematics GCE



GCE Mathematics gives pupils the opportunity to consolidate and extend the knowledge, skills and understanding developed during Key Stage 4. The qualification will provide a suitable foundation for the study of mathematics and other subjects in further and higher education and for a range of interesting careers.

You will learn to:

- develop your understanding of mathematics in a way that promotes confidence and fosters enjoyment;
- extend your range of mathematical skills and techniques, and use them in more difficult problems;
- develop an awareness of the relevance of mathematics to other fields of study, to the world of work and to society in general.

Entry Requirements:

Grade **A** in GCSE Maths, Further Maths preferred

The course is divided into four modules , two will be completed at AS-Level, and the other two at A2. The content is summarized below:

Assessment

Unit AS 1—Pure Mathematics: Algebra and functions, co-ordinate geometry, sequences and series, trigonometry, exponentials and logarithms, differentiation, integration and vectors.

Unit AS 2—Applied Mathematics: Quantities and units, kinematics, forces and Newton's laws, statistical sampling, data presentation and interpretation, probability and statistical distributions.

Unit A2 1—Pure Mathematics: Content as per AS1 (with relevant topics studied in further detail) plus numerical methods.

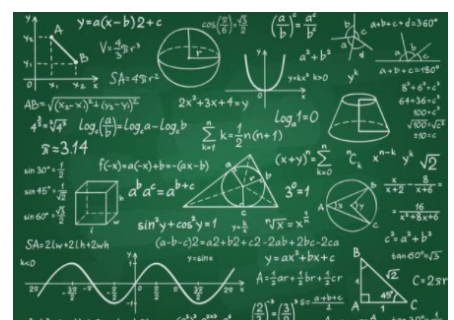
Unit A2 2— Applied Mathematics

Progression and career opportunities

A Level Maths teaches you to think in a logical way, and is held in high regard by employers and universities alike. Maths has a number of transferable skills including logical skills, problem solving and analytical skills. Some of the most interesting , high-profile and well-paid careers revolve around Maths. Careers in finance, engineering, computing and business are all crying out for people with Maths qualifications.

Exam Board: CCEA

HOD: Mr Crooks



Moving Image Arts GCE



Whether accessed through cinema, television, DVD or the internet, moving images are a primary source of information and knowledge about the world. Moving image literacy is therefore critical to understanding and interpreting modern society.

You will learn to:

- develop knowledge and understanding of film-making techniques;
- analyze the work of others in terms of film language, forms, conventions, purpose and meanings;
- develop ideas through investigating and experimenting with film-making techniques and processes;
- film and edit your own short film.

Assessment

The course is divided into four units:

AS 1 - Foundation Portfolio—Realist and Formalist Techniques and the Classical Hollywood Style.

The foundation portfolio is worth 60% of AS and 24% of full A level. Students must create an original short film or animation. This element is internally assessed.

AS 2 - Critical Responses

This unit is worth 40% of AS and 16% of full A level. The exam is based the following film areas:

- Alfred Hitchcock and the Classical Hollywood Style
- Formalism: Early European Cinema and American Expressionism.

A2 1 - Advanced Portfolio—Creative Production and Research (External)

Worth 36% of the full A level. The objective of the advanced portfolio is to allow students to explore how different artistic disciplines and approaches have influenced the form and style of moving image.

A2 2—Advance Critical Response

Worth 24% of full A level. The exam is based the following film areas:

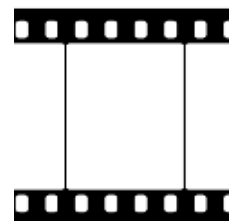
- Realism: Narrative and Visual Style
- Creative Exercise
- Comparative Analysis.

Progression and career opportunities

GCE Moving Image Arts enables progression to a career within the creative industries. The rapid growth of digital media technologies has made the creative industries increasingly accessible and attractive to young people. Television Production is a fast growing industry in Northern Ireland.

Exam Board: CCEA

HOD: Miss White



Performing Arts GCE



Participating in Performing Arts will develop your self-confidence, self-awareness, personal discipline and creativity. Performing Arts is a collaborative discipline involving teamwork and self-management. Employers look for these qualities in prospective employees.

This qualification will give you opportunities to:

- research and gain insight into the industry;
- engage with effective practice; and
- prepare for employment, further training and/or study.

Assessment

The course is divided into four units:

AS - Unit 1 - Developing Skills and Repertoire

You will explore two contrasting acting styles through research and practical work.

AS - Unit 2 - A Performing Arts Event

As a member of a group, you will respond to a given stimulus to create a performing arts event that will be performed to an examiner.

A2 - Unit 1 - Planning for Employment

You will learn about the employment opportunities available in the Performing Arts industry. You will develop materials such as a CV, show reel and a promotional portfolio. You will also participate in an audition and interview.

A2 - Unit 2 - Performing to a Commission Brief

You and your fellow students will form a production company and realize a performing arts event. As well as participating in the actual performance, each member of the group will also have an administrative role to play.

There is no written exam in this subject. Written coursework is marked by the teacher and externally moderated. The practical work is marked by a visiting examiner.

Progression and career opportunities

Performing Arts is a growing industry in Northern Ireland. This course provides a solid foundation for progression to further study, training or employment in the performing arts industry. Qualifications in performing arts can lead to employment in areas such as dance, drama, theatre, film and television. The course will also provide you with creative skills valued by many employers.

Exam Board: CCEA

HOD: Mrs Hastings



Professional Business Services GCE



Professional Business Services provides students with a better understanding of business services through active participation in the business environment. The specification builds on the foundation laid by the GCSE Business Studies and GCSE Business Communication Systems specifications currently offered in school.

The course is an industry-endorsed specification, appropriate for students seeking a bespoke business training program or apprenticeships as well as those seeking progression to relevant Higher and Further Education programs or Higher Level Apprenticeships.

These can be linked as part of the overall business course or as a foundation for; Business Professional Services, Project Management, Leadership and Management, Marketing, Accountancy, ICT, Customer Service and Human Resources to name but a few.

Progression and career opportunities

This course offers an excellent foundation for a career in;

Business Professional Service, Finance, Accountancy, Technology in Business, Project Management, Management and Leadership, Human resource management, Customer service, Self-employment, Higher Level Apprenticeships, Degree Level qualifications.

Assessment

The course is divided into 6 units: 2 portfolio units and 4 examinations (2 each year)

Unit 1 (AS): Introduction to Professional Business Services – (Exam) 1 hour 30 mins

Unit 2 (AS): Human Resource Services -this is 100% portfolio based on a pre-released case study and is externally moderated.

Unit 3 (AS): Financial Decision Making—(Exam)

1 Hour 30 Minutes Exam

Unit 4 (A2): Technology in Business—(Exam)

2 Hours

Unit 5 (A2): Leadership and Management – (Exam)

2 Hours

Unit 6 (A2): Project Management skills and Processes – 100% portfolio based and is externally moderated.

Exam Board: CCEA

HOD: Mrs Tuff



Psychology GCE



This course is offered through collaboration with the NRC. This means that your course will be delivered entirely at the NRC

This qualification offers an engaging and effective introduction to Psychology and provides the opportunity for learners to develop their knowledge to pursue a career at undergraduate level in Psychology, Nursing, Social Work, Counselling, Teaching or Youth Work.

Units include: Unit 1. Introductory topics in Psychology Social influence Memory Attachment Psychopathology.

Unit 2. Psychology in Context Approaches in Psychology Biopsychology Research methods.

Unit 3. Issues and options in Psychology Issues and debates in Psychology Option 1 – Cognition and Development Option 2 - Stress Option 3 - Aggression.

Entry Requirements: Learners must have at least 7 GCSE's at grade C or above including a B in English Language. A GCSE in RE or History is also preferred as this course requires the student to be able to write in a convincing and extended manner.

Progression and career opportunities

Psychology, Nursing, Social Work, Counselling, Police Service, Teaching or Youth work.



Exam Board: AQA

Contact: Mrs Alexander

Assessment

AS: Paper 1: Introductory Topics in Psychology (Exam 1 hour 30 mins)

Paper 2: Psychology in Context (Exam 1 hour 30 mins)

A2: Paper 1: Introductory Topics in Psychology (Exam 2 hours)

Paper 2: Psychology in Context (Exam 2 hours)

Paper 3: Issues and Options in Psychology (Exam 2 hours)



Religious Education GCE



GCE Religious Studies gives students a chance to develop an interest in and enthusiasm for Religious Studies. They will adopt an enquiring, critical and reflective approach to the study of religion, as well as to cultural and current issues in society today. Religious Studies prompts challenging questions about the meaning of life, beliefs about God, the self, right and wrong, and what it means to be human. It develops knowledge and understanding of Christianity and other principal religions, religious traditions and worldviews that offer answers to these questions. It provides opportunities for personal reflection and spiritual development.

Religious Studies gives students opportunities to:

- develop understanding of how beliefs, values and traditions influence individuals, communities, societies and cultures;
- make reasoned and informed judgements about religious and moral issues, referring to the principal religions' teachings and developing confidence in their own beliefs and values; and

Prior attainment

Pupils do not need to have reached a particular level of attainment in Religious Studies prior to study this course. However, the specification builds on the knowledge, understanding and skills developed across the curriculum at GCSE.

Assessment

The full Advanced GCE award is based on student's marks for the AS (40 %) and the A2 (60 %).

For both AS level and A2, students complete two units of study:

Unit 1: An introduction to the Gospel of Luke

This unit is worth 50% of the final mark and it is assessed externally through written examinations in Year 13 and 14.

Unit 2: The Origins and Development of the Early Church

This unit is worth 50% of the final mark and it is also assessed externally through written examinations in Year 13 and 14.

Progression and career opportunities

GCE Religious Studies provides a good background for any career where understanding about people is an asset, including teaching, social work, youth work, journalism, the police, broadcasting, the medical and caring professions and human resource management.

Exam Board: CCE

HOD: Mrs McKillop



Sport BTEC



The course specification has been structured to provide learners with a wide-ranging knowledge base, comprising of both mandatory units of study and an optional unit within the course:

Unit 1: Anatomy and Physiology

Unit 2: Fitness Training and Programming for Health, Sport and well being

Unit 3: Professional Development in the Sports Industry

Unit 5: Application of Fitness Testing

You will learn to:

- identify the structure and function of different body systems and interrelationships between them for sports performance;
- interpret lifestyle factors and health screening data in order to develop and justify a fitness training programme and nutritional advice;
- explore the knowledge and skills required for different career pathways in the sports industry;
- Understand the requirements of fitness testing and learn how to safely conduct a range of fitness tests for different components of fitness.

Progression and career opportunities

The BTEC National Extended Certificate in Sport is recognised and valued by Universities and allows students to progress to a HNC/HND or Honours Degree programme. It is also a very worthwhile and suitable qualification for anyone wishing to pursue a career path in the health or sports industries. These areas may include careers in exercise and fitness, coaching, sports development and the outdoors.

Assessment

Unit 1: 1.5 hour exam with a mixture of short and long answer questions (**Externally marked—33.3%**)

Unit 2: A written task with pre-released information to be completed within 2 hours supervised assessment time (**Externally assessed—33.3%**)

Unit 3: Internally assessed assignments (16.7%)

Unit 5: Internally assessed assignments (16.7%)

A grading scale of **Entry requirements:**

There is a high level of science involved in the examined unit, therefore it would highly desirable for pupils to have achieved a minimum of a **Grade B** in GCSE Single Award Science. **A background in YMCA Level 2 Community Sport is not suitable preparation for this course.** Successful students will be self-motivated, capable of working independently and able to consistently meet deadlines.

Exam Board: Pearson

HOD: Mr Douglas



Travel and Tourism BTEC



BTEC Travel and Tourism aims to encourage students to develop broad skills, knowledge and understanding of the travel and tourism industry and should prepare students for further study or training in travel and tourism related occupations.

Progression and career opportunities

BTEC Travel and Tourism enables progression to obtain further study at many universities. It provides an excellent grounding for those seeking employment in a wide variety of settings including various roles within the business and travel industry.

Interesting Facts

Travel and Tourism experts have said the 2021 is the year to start studying Travel and Tourism as the industry will see massive growth in a couple of years after the pandemic

Tourism is one of the biggest growth industries in Northern Ireland with over 43,000 jobs and growing yearly .

Progression and career opportunities

- Travel Agent
- Tour Operator
- Event Management
- Customer Service
- Hospitality Industry
- Wholesaler
- Cruising
- Tourism Services
- Visitor Information
- Transport

Exam Board: Pearson

HOD: Mrs Tuff

Assessment

2 examinations and 2 coursework units.

The course is divided into four units:

Unit 1—**The World of Travel and Tourism**

Unit 2— **Global Destinations**

Unit 3—**Principles of Marketing in Travel and Tourism**

Unit 9 — **Visitor Attractions**



Post 16 Study



In this section, you can learn more about our local Universities and in addition you will find many links to support your decisions regarding subject choice and forward pathways.

Ulster University

Ulster University is one university with four distinct campuses across Northern Ireland—Belfast, Coleraine, Jordanstown and Magee.

While each campus differs in size and has its own distinctive atmosphere, wherever you choose to study, you will receive the same first class teaching and supportive learning environment, and experience the unique character that makes Ulster one of the most popular universities in the UK.



Entry Requirements

General Entry Requirements

If you are thinking about applying for Ulster University you need to see the specific entry criteria outlined in the Prospectus.

General entry requirements say that—depending on the course—they may accept students with two a-levels if they have a good profile of GCSE results. However, the vast majority of courses will require you to complete three A-levels.

The majority of courses will accept A-Level equivalents such as BTEC Subsidiary Diplomas and CTEC Introductory Diplomas but it is vital you check the specific course information as the requirements can change—especially for high demand courses.



Course Specific Requirements

If you satisfy the general entry requirements it is VITAL that you also check the Course Specific requirements—they will usually need you to have certain grades in specific subjects.

The course offer may be made including a combination of tariff points, A-level grades and specific subjects. For example Technology with Design entry criteria is “*BBB to include one grade B from A-*

Level Mathematics, Physics, Chemistry, Technology and Design, Design and Technology, Engineering or Double Award Science. Applicants presenting A-Level Mathematics or Physics will receive a two grade reduction at the time of offer.”

They may change from year-to-year so make sure you carefully read the current prospectus or check on-line via UU Course Finder—<http://www.ulster.ac.uk/courses/course-finder>

Belfast

Cathedral Quarter is the artistic and cultural center of the city. Although traditionally associated with art, the campus spans a range of subjects including architecture, hospitality, Irish language, event management, photography and digital animation.

Coleraine

A wide range of subjects are available at Coleraine which makes for an interesting mixture of students and staff. Subject areas include biomedical sciences, environmental science and geography, the humanities and languages, media and journalism, travel and tourism and computing.

Jordanstown

The largest of the campuses located just seven miles north of the city.

The campus has a strong profile in business, engineering, computing, social sciences, communication and academic disciplines relating to the science and coaching of sport.

Magee

The friendly village atmosphere in Magee is synonymous with creativity; it is home to the School of Creative Arts and Technologies. Teaching strengths include business, creative arts, creative technologies, computing, engineering, nursing, social sciences, law and psychology.



Post 16 Study



The information below gives you some insight to Queen's university, Belfast, however, for further information you should look directly at their website and course directory

Queen's University of Belfast

Queen's University, Belfast is a member of the Russell Group of 24 leading UK research-intensive universities, providing world-class research. QUB is among the top 1% of global universities and is a UK top ten research-intensive university.

With more than 17,000 students and 3,700 staff, it is a dynamic and diverse institution, a magnet for inward investment, a patron of the arts and a global player in areas ranging from cancer studies to sustainability, and from pharmaceuticals to creative writing.

Entry Requirements

General Entry Requirements

If you are thinking about applying for Queen's University, you need to see the specific entry criteria outlined in the Prospectus.

However, for all courses at QUB you must ensure you study only one Single Award A-Level equivalent qualification (such as BTEC National Extended Diploma, Cambridge Technical Introductory Diploma etc.) as part of your Level 3 qualifications (except Dentistry, Medicine or Pharmacy where only A-Level are acceptable).

ACCEPTABLE

- 3 A-Levels
- 2 A-Levels and 1 Single Award
- 1 A-Level and 1 Double Award
- 1 Single Award and 1 Double Award

NOT ACCEPTABLE

- 3 Single Awards
- 1 A-Levels and 2 Single Awards



You will also require 5 GCSE grade A-C including English and Maths.

Course Specific Requirements

If you satisfy the general entry requirements it is VITAL that you also check the Course Specific requirements—they will usually need you to have certain grades in specific subjects.

They may change from year-to-year so make sure you carefully

read the current prospectus or check on-line via QUB www.qub.ac.uk/study/undergraduate

The course offer may be made including a combination of tariff points, A-level grades and specific subjects. For example Product Design Engineering entry criteria is *"ABB including Mathematics and at least one from Physics (preferred), Biology, Chemistry, Further Mathematics, Technology and Design or Double Award Life and Health Sciences."*



**QUEEN'S
UNIVERSITY
BELFAST**

What else to Queen's look for?

Good grades are obviously the key element to being accepted at university, QUB also look for those added extras that potential students can bring.

Extra-curricular activities or hobbies related to the course you are applying for can be a boost to your application, as can positions of responsibility, such as being a prefect or team captain.

Be on the look out for degree-related volunteering opportunities or work experience. These will not only make your application stand out, but will also ensure that you are choosing the right degree for your and your future.

Put simply, QUB look for enthusiastic, motivated and bright students who show a passion for their chosen subject!

Post 16 Study



Eye4Education

www.eye4education.co.uk

Click on **Resources** then **Parent Information** and enter password: **eye4education**

Under **Subject** you will find a list of subjects. Click to see a range of subject related careers.

NI Careers – Careers A-Z

www.nidirect.gov.uk/careers

Click on **Careers A-Z**. Selecting **A-Levels/GCSE** brings up a list of subjects. Clicking on each subject allows you to

Success at School

<https://successatschool.org/>

A site that covers absolutely everything about careers; from job/career information to CV tips and templates to quick 60 second videos of a range of jobs.

General University Information

UCAS

www.ucas.com

The University and Colleges Admissions Service that co-ordinates all University applications in the UK. Includes a comprehensive Parents section where you can find advice to help you support your son or daughter throughout the UCAS application cycle, including videos and tips for getting started.

CAO

www.cao.ie

The website of the Central Applications Office which is used when applying for University in the Republic of Ireland.

The Complete University Guide

www.thecompleteuniversityguide.co.uk

An overview of all Universities in the UK, using League Tables to help you decide on the best University for you, overall and by subject.

The Uni Guide

www.theuniguide.co.uk

Part of The Student Room—loads of advice and guidance about University options and matching your subjects to related degree areas.

Post 16 Study



Local Universities

Browse their websites to find out information about the courses on offer:

Queen's University, Belfast	www.qub.ac.uk
Ulster University	www.ulster.ac.uk
Stranmillis College	www.stran.ac.uk
St Mary's College	www.stmarys-belfast.ac.uk

Colleges in Northern Ireland

The websites for the six individual Colleges in NI are listed below.

Belfast Met	www.belfastmet.ac.uk
College of Agriculture, Food and Rural Enterprise (CAFRE)	www.cafre.ac.uk
Northern Regional College (NRC)	www.nrc.ac.uk
North West Regional College (NWRC)	www.nwrc.ac.uk
South Eastern Regional College (SERC)	www.serc.ac.uk
Southern Regional College (SRC)	www.src.ac.uk
South Western Regional College (SWRC)	www.swrc.ac.uk

Apprenticeships NI <https://www.nidirect.gov.uk/apprenticeships>

A guide to Apprenticeship opportunities available in Northern Ireland

Foundation Degrees <https://www.nidirect.gov.uk/articles/foundation-degree-courses>

Information about this higher level qualification that combines academic and work related learning, offering a route into employment or university.

Post 16 Study



Guides to help with career planning <https://www.nidirect.gov.uk/publications/guides-help-career-planning>

Links to separate downloadable pdfs—one for parents and for young people. These cover all aspects of careers and employment opportunities. It also gives details about how the Careers Service can help.

Careers Box www.careersbox.co.uk

A range of career films on the web – a wide range of jobs, from heating engineers to apprentice jockeys! Plenty of information on employment, apprenticeships, university etc.

NI Skills Barometer <https://www.economy-ni.gov.uk/publications/northern-ireland-skills-barometer-2019-update>

A summary of a recent report that provides a detailed understanding of the skill requirements for the Northern Ireland economy up to 2028 with the aim of ensuring that any skills gaps are identified and addressed. The research analyses where the skills gaps are currently, where they are emerging and where they are likely to emerge over the longer term.

Chat to a Careers Advisor <https://www.nidirect.gov.uk/services/chat-with-a-careers-adviser>

NI Direct offer an online web chat for anyone who requires any further information, advice or guidance about their career.

Dunclug College Careers Twitter

Follow us [@DunclugCareers](https://twitter.com/DunclugCareers) for regular updates about the world of Careers!



Dunclug College

91 Doury Road

Ballymena

BT43 6SU

T (028) 25653665

E info@dunclugcollege.ballymena.ni.sch.uk

W www.dunclug-college.co.uk